

# Ermioni HSC Seats

The mechanism "Suspension Ver. PL" has been designed to cooperate with any seat which is going to be used for giving shock mitigation to extreme or pleasure high speed crafts.

The term "PL" stands for "PLeasure". The mechanism, due to its geometry and the reclining shock adjustment, provides:

- Wider range of passenger weight.
- Better comfort conditions during any trip or mission.
- Optimal body posture for handling both static and dynamic loads.
- Optimum shock mitigation for spine and neck.

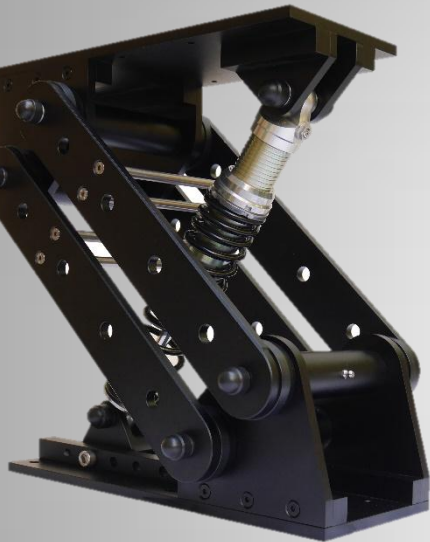


Our goal to be in the fore front of HSC seats manufactures lead us to Ohlins, the worldwide leader in racing motor sports and famous for their passion for innovations and their state-of-the-art technology. (more about Ohlins [here](#)).

The perfect quality of the shock, combined with the dedicated settings made by the Greek Ohlins Team, places this suspension system among the leaders of its category.

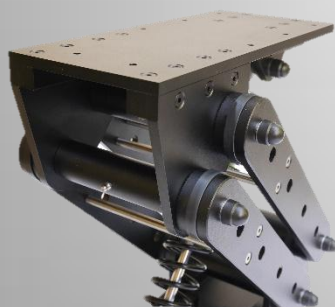
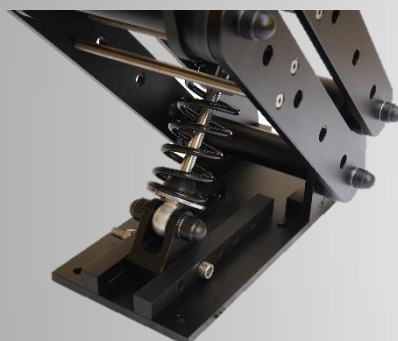
Every detail (low friction joints, bearings, materials, settings, painting, strength, dynamic response, comfort.. etc) has been designed with special care in order to increase the reliability and the product life span.

Test-bed experiments and measurements for evaluating the dynamic behavior of the developed suspension system are carried out in "Systems and Measurements" Laboratory in Electrical & computer Engineering Dept. of University of Patras, Greece.



Suspension Ver PL





#### Suspension System:

- **Model:**
  - Suspension Ver. PL
- **Color:**
  - Anodized, Inox (Standard), 20µm
  - Any other upon request (optional)
- **Material:**
  - AL 6082, 6061-T6, 5083-H321
  - SST 316 / 304L
- **Bearings:**
  - Taper x 8
- **Weight:**
  - 16.1 Kg (35.49 lbs) (with shock)
- **Dimensions (LxHXW ):**
  - (389-439)x(396-445)x260 mm<sup>3</sup>
  - (15.31-17.28)x(15.59-17.52)x10.24 in<sup>3</sup>
- **Passenger Weight:**
  - 75-110Kg (165-242,5lbs) Standard Optimum Range
  - For lighter or heavier passenger, a different sprint should be used.

#### Shock:

- **Shock Absorber:**
  - Ohlins
- **Stroke (Vertical direction):**
  - 76.5 (3.01") - 83mm (4.26") (depending on adjustment)
- **Spring:**
  - Progressive, Ohlins
  - There is a range of springs that can be used in order to meet any customer requirement and level of comfort.
- **Adjustments:**
  - Preload, 9 positions
  - The rebound is self adjusted according to compression speed
  - Shock direction slope, 5 positions

Weight: 1.5 kg (3.31 lbs)

#### Warranty:

- Metal structure: two (2) years
- Shock: two (2) years

#### Maintenance:

- **Structure:**
  - Clean water after every usage in salty environment.
- **Shock:**
  - Regular use of Denicol MULTI USER 101 spray code 03101
- **Bearings:**
  - Grease, every year

#### Applications:

- Can be fitted to any seat using a special fitting adapter.
- Can be combined with any "Ermioni HSC seat" without modifications using a special fitting adapter.
- For any High speed boat.
- Suggested for seats with passengers in seated positions.
- Indoor or outdoor use.

#### Notes:

- Powder coating with a coat of polyester paint.
- The painting is certified by the internationally recognized QUALICOAT and also have an extra SEASIDE certification.
- Anodized thickness: 20µm.