

# 2024

Date: 18-2-24



## Advanced Suspension systems for high speed boats

[www.er-products.com](http://www.er-products.com)

[Info@er-products.com](mailto:Info@er-products.com)



**"ERpro Seats"** are high performance products that are designed to mitigate vibrations on high speed boats on high speed crafts, protect the crew/passengers from injury and provide better comfort conditions during any trip or mission. All products are simple, durable and designed to meet the most demanding customer needs.



ÖHLINS, the worldwide leader on vibration control of any type and famous from the racing motor sports (Moto GP & Formula 1), supports our products by designing special shocks for the ERpro Seats.

(More about ÖHLINS: [here](#)).

Every detail has been designed with special care in order to increase the reliability and the product life span with the main structure made of marine *aluminum alloys*.

The mechanisms have been tested for shock mitigation according to ISO 2631-5 and NATO RTO-MP-AVT-110.

Every seat may be combined with different suspension systems (*Suspension "MIL", "PL ADV", "PL", "PLS" & "Susp. RG"*) so as to increase the range of use.

The term **"MIL"** stands for **"MILitary"**, because this type of mechanism was originally designed in order to satisfy the Greek Navy requirements. Since then, the original designs have been improved to meet a wider range of applications.

The term **"PL"** stands for **"PLeasure"**. This mechanism, due to its geometry and the reclining shock adjustment, provides:

- Wider range of passenger weight.
- Better comfort conditions during any trip or mission.
- Optimal body posture for handling both static and dynamic loads.
- Optimum shock mitigation for spine and neck.

The term **"ADV"** stands for **"ADVance"**. The specific mechanism has been improved by incorporating all the experience we have gained from our involvement with high-speed boats and the damping of vibrations presenting a particularly enhanced structural integrity.

The term **"PLS"** stands for **PLeasure** and **Short**. This mechanism, due to its geometry and the reclining shock adjustment provides:

- Height adjustment.
- Easy weight adjustment.
- Better comfort conditions during any trip or mission.
- Optimal body posture for handling both static and dynamic loads.
- Optimum shock mitigation for spine and neck.

The term **"RG"** stands for **Rail Guides**. This mechanism has been designed to support models where a single strut at the back of the seat gives a unique and compact support system of operation.

## Why aluminum?

The basic structure material is Aluminum for the following reasons:

### Life Limit

- Corrosion Resistant
- Naval alloys series 5000 and 6000 are known for their high strength, corrosion resistance, and good elasticity.
- An aluminum product is estimated to have a life span of more than 30 years.

### Light weight products

- The low density of aluminum, combined with high strength, toughness, and corrosion resistance, allow vessel designers to achieve weight reduction of 20-30%.

### Recyclability

- Over two-thirds of all the aluminum ever produced is still in use today.

### Fire Resistance

- Aluminum is described as non-combustible (British Standard BS476). The same set of standards gives aluminum high marks on fire resistance versus spreading scale.

### Maintenance

- Aluminum products are preferred in hard- demanding applications because the repair procedure is easy and quick.
- Widespread use (Military, Landing crafts, Lifeguards and many Fishing boats are made from aluminum).
- Low Maintenance Cost.



## Warranty

The metal structure is covered with a warranty of two (2) years.

Fabric: one year warranty is offered against manufacturing defects or workmanship by the manufacturer.

Shock Absorber (ÖHLINS): two years warranty.

The warranty has validity only when the user follows the manufacturer's or subcontractor's maintenance program and it is proved that the user is not responsible for incorrect or unusual use.



## Maintenance

Structure maintenance according to product's manuals.

The fabric follows manufacturer's instructions.

The shock follows manufacturer's instructions (ÖHLINS). The shock can be repaired in any Authorized ÖHLINS work shop.



# Paint

Powder coating with a coat of polyester paint.

The painting is certified by the internationally recognized QUALICOAT and it also has an extra SEASIDE certification.



Note: The color of the images may differ from reality. Customers should ask for more clarifications before any purchase.

# Upholstery

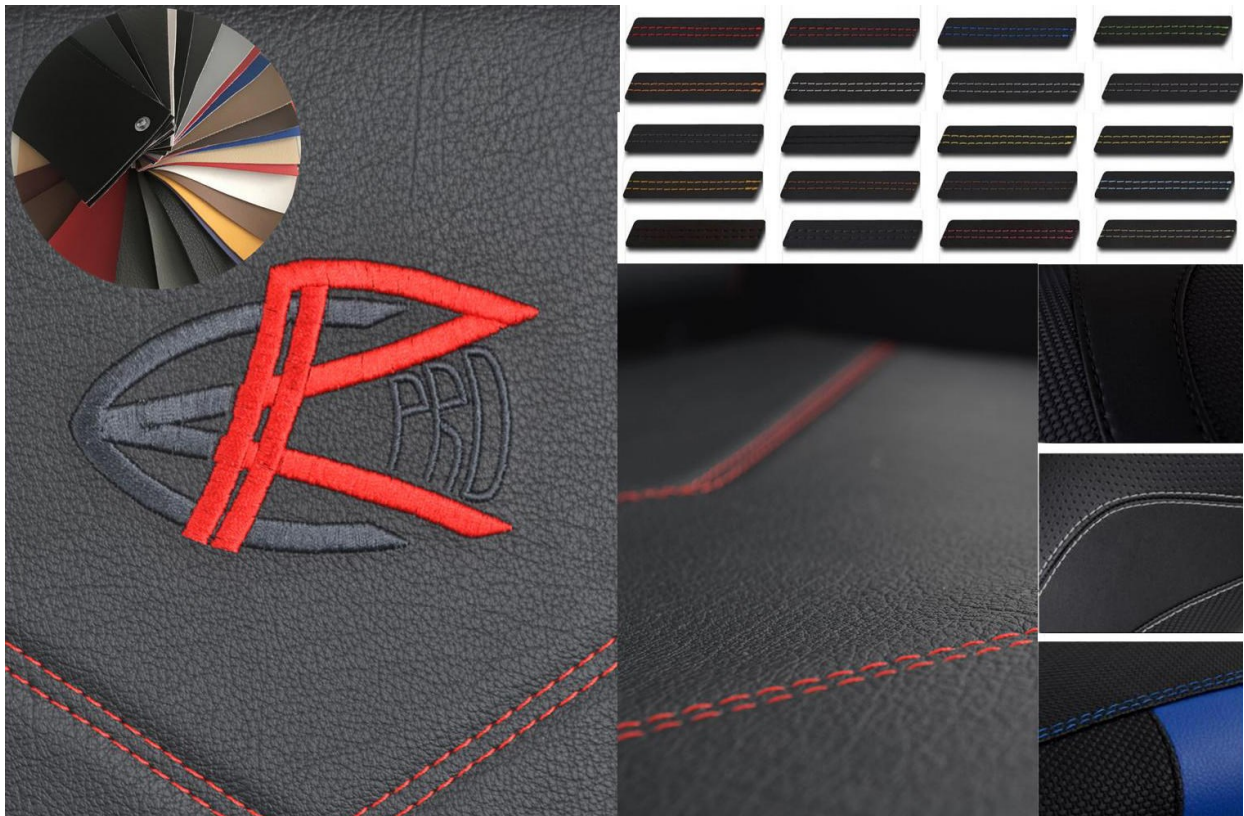
Upholstery is a complex combination of the structure, the foam and the fabric.

A unique, separate and independent structure consisting of different materials undertakes the role of successfully holding the materials of the upholstery. Over the years many changes and improvements have been made so that today we end up with a very light and stable infrastructure.

The foam materials we use are specially designed and chemically formulated after a number of laboratory and live tests to provide better pressure distribution and better blood circulation at the contact points for a more relaxing ride. Especially on jockey series seats, the quality and quantity of the foam provides the greatest possible protection against injury.

The fabrics are chosen suitable for use in a marine environment and with special emphasis on the elasticity factor so that they can give a nice and uniform shape to the seat without creasing and as long as possible resistance to time.

Beautiful seams, excellent techniques and a variety of colors frame the final work of the upholstery.



# INDEX

## MIL MODELS PG 6-13



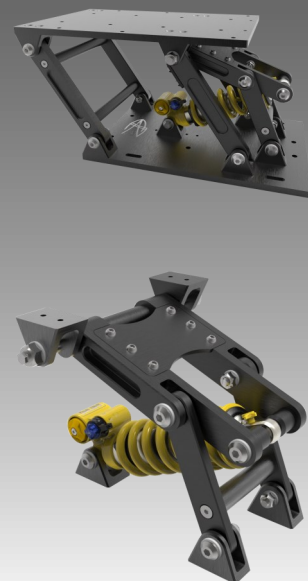
## PL ADV MODELS PG 14-21



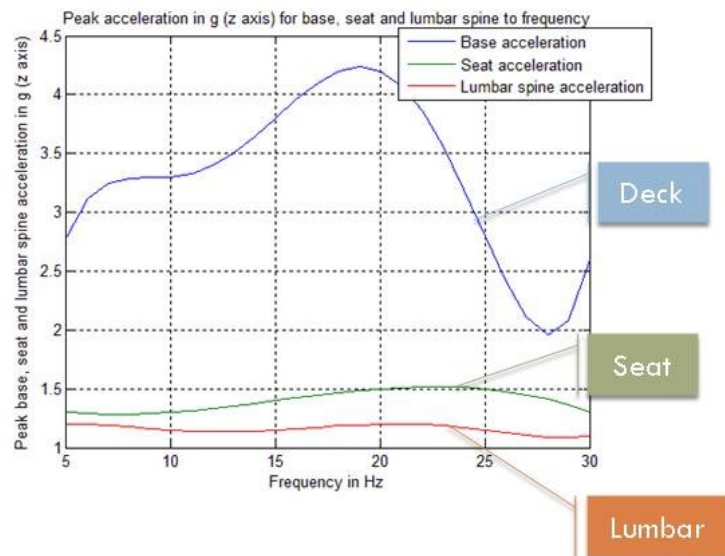
## CH MODELS: PG 25-40



## SUSPENSION PLS PG 22-24



# Suspension MIL



The mechanism "Suspension MIL" has been designed to cooperate with any type of seat installed in extreme or pleasure high speed crafts and in need of shock mitigation.

The term "MIL" stands for "MILitary", because this mechanism was originally designed for satisfying the Greek Navy requirements. Since then the original designs have been improved to meet a wider range of applications.

The mechanism has been designed to satisfy mostly the passengers who prefer the standing/ straddling position rather than the seated position.

Our goal to be in the fore front of HSC seats manufactures led us to:

- *ÖHLINS*, the worldwide leader in racing motor sports and famous for their passion for innovations and their state-of-the-art technology (more about ÖHLINS: [here](#)), for producing dedicated shocks.
- "Systems and Measurements" Laboratory in Electrical & computer Engineering Dept. of *University of Patras*, Greece for carrying out Test-bed experiments and measurements.
- Advanced technology adoption for improving the reliability and product life span.

The perfect quality of the shock, combined with the dedicated settings made by ÖHLINS and the detailed design (low friction joints, bearings, materials, settings, painting, strength, dynamic response, comfort, etc), places this suspension system among the leaders of its category.

The mechanism has been tested for shock mitigation from -4g to 4g under frequencies 5-30Hz according to:

- ISO 2631-5 "Mechanical vibration and shock - Evaluation of human exposure to whole-body vibration - Part 5: Method for evaluation of vibration containing multiple shocks".
- NATO RTO-MP-AVT-110 "Shock Mitigation for the Human on High Speed Craft: Development of an Impact Injury Ign Rule".

# Susp. MIL

## Suspension System:

Model:

Susp. MIL

Color:

Black, E-05905-S SABLE (standard)  
Anodized (Optional)  
Any other upon request (optional)

Material:

AL 6082, 6061-T6, 5083-H321  
SST 316 / 304L

Weight:

14.5 Kg (31.97 lbs) (with shock)

Dimensions (LxHXW):

360x629x200 mm<sup>3</sup>

Passenger Weight:

75-95Kg (lbs) Standard Optimum Range  
For lighter or heavier passenger, a different sprint  
should be used.

## Shock:

Shock Absorber:

ÖHLINS

Stroke:

98mm (3.85")

Spring:

Progressive, ÖHLINS

There is a range of springs that can be used in  
order to meet any customer requirement and level  
of comfort.

Adjustments:

Preload  
Rebound

## Maintenance:

According to product manuals.

## Use:

Indoor or outdoor

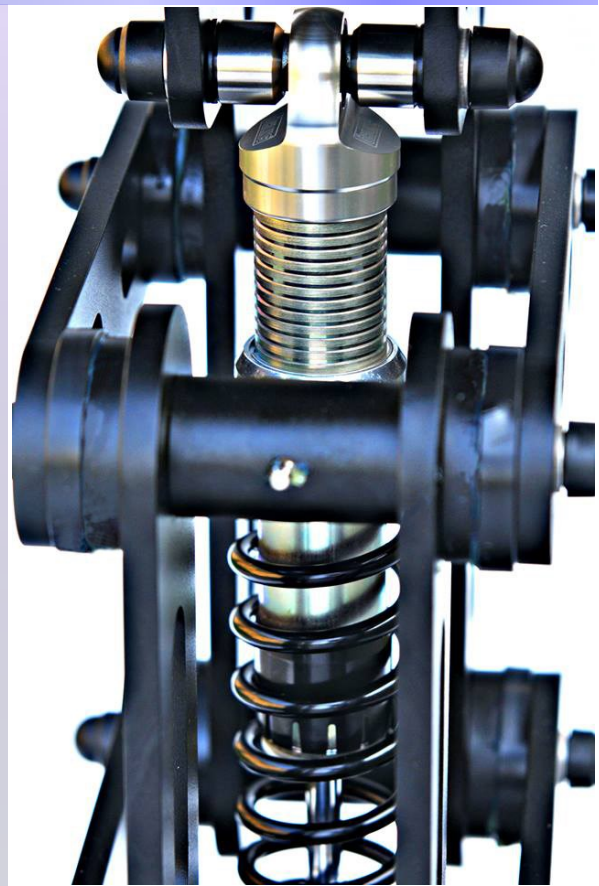
## Applications:

Can be fitted to every seat using a special fitting adapter.

Can be combined with every "ERpro seat" without  
modifications using a special fitting adapter.

For any High speed boat.

Preferred for seats with passengers in standing/ straddling  
position.



[www.er-products.com](http://www.er-products.com) /

[Info@er-products.com](mailto:Info@er-products.com)

# Jockey, J-MIL



## **Note**

One of the biggest advantages of our jockey series seat is the seat foam, the quality and quantity of which provides the greatest possible protection against injury.

## **Description**

The Jockey MIL (J-MIL) seat is designed to protect the crew and passengers of high-speed craft from injury. The Jockey version has been used and certified by the Greek Navy.

The suspension system is supported by ÖHLINS, the worldwide leader of racing motor sports and famous for their passion for innovations and their state-of-the-art technology. (More about ÖHLINS: [here](#))

The perfect quality of the shock combined with the low friction joints places this suspension system among the leaders of their category.

Every detail has been designed with special care in order to increase reliability and the product life span with the main structure with the main structure being composed of marine aluminum alloys .

## **Features**

- High backrest for maximum comfort and support.
- Longer saddle sides for optimal lateral support in straddling position.
- Horizontal handle support for passengers seating behind.
- ÖHLINS' Adjustable Progressive Shock Absorber.
- Synergizes with human muscular reflex system.
- Shaped to protect the rider from injuries in all conditions.
- Activates the human natural reflex-based muscular protection system.
- Distributes impacts between arms and legs to protect back and neck.
- Self-adjusting height depending on weight.
- Optimum shock mitigation in the spine and neck direction.
- Test-bed experiments and measurements by "Systems and Measurements" Laboratory of University of Patras.
- Tested for shock mitigation from -4g to 4g under frequencies 5-30Hz according to ISO 2631-5.



# J-MIL

## Suspension System:

Model: Susp. Mil  
Color: Black, E-05905-S SABLE (standard)  
Anodized (Optional)  
Any other upon request (optional)  
Material: AL 6082, 6061-T6, 5083-H321  
SST 316 / 304L

## Seat:

Model: Jockey  
Structure Color: Black, 9005 STR (standard)  
Any other upon request (optional)  
Structure Material: AL 5083  
Fabric: Textile V1, Black  
Any other upon request (optional)

## Stroke:

98mm (3.85")

## Total weight:

21 kg (46.30 lbs) (with ÖHLINS)

## Total Dimensions (LxHXW):

711x1202x257 mm<sup>3</sup>

## Shock:

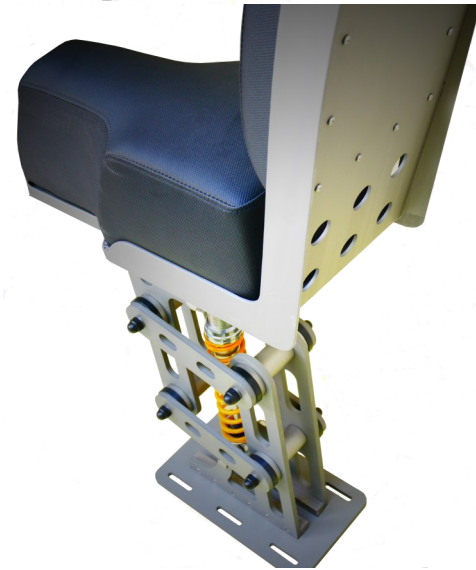
Shock Absorber: ÖHLINS  
Adjustments: Preload, rebound.  
There is a range of springs that can be used in order to meet any customer requirement and level of comfort.

## Maintenance:

According to product manuals.

## Use:

Indoor or outdoor



Optional



Cover



Side supports



2-point seat belts

Optional



[www.er-products.com](http://www.er-products.com) /

[Info@er-products.com](mailto:Info@er-products.com)

# Jockey, J-S-MIL



## **Note**

One of the biggest advantages of our jockey series seat is the seat foam, the quality and quantity of which provides the greatest possible protection against injury.

## Description

The Jockey-S MIL (J-S-MIL) seat is designed to protect the crew and passengers of high-speed craft from injury. The Jockey version has been used and certified by the Greek Navy.

This model ("S" for Short) is specially designed for pilot/co-pilot and limited spaces with compact/shorter saddle design.

The suspension system is supported by ÖHLINS, the worldwide leader of racing motor sports and famous for their passion for innovations and their state-of-the-art technology. (More about ÖHLINS: [here](#))

The perfect quality of the shock with the self adjusted rebound system combined with the low friction joints places this suspension system among the leaders of their category.

Every detail has been designed with special care in order to increase the reliability and the product life span with the main structure made of marine aluminum alloys.

## Features

- High backrest for maximum comfort and support.
- Longer saddle sides for optimal lateral support in straddling position.
- Horizontal handle support for passengers seating behind.
- ÖHLINS Adjustable Progressive Shock Absorber.
- Synergizes with human muscular reflex system.
- Shaped to protect the operator rider from injuries in all conditions.
- Activates the human natural reflex-based muscular protection system.
- Distributes impacts between arms and legs to protect back and neck.
- Self-adjusting height depending on weight.
- Optimum shock mitigation in the spine and neck direction.
- Test-bed experiments and measurements by "Systems and Measurements" Laboratory of University of Patras.

12. Tested for shock mitigation from -4g to 4g under frequencies 5-30Hz according to ISO 2631-5.

# J-S-MIL

## Suspension System:

Model: Susp. MIL  
Color: Black, E-05905-S SABLE (standard)  
Anodized (Optional)  
Any other upon request (optional)  
Material: AL 6082, 6061-T6, 5083-H321  
SST 316 / 304L

## Seat:

Model: Jockey-S  
Structure Color: Black, 9005 STR (standard)  
Any other upon request (optional)  
Structure Material: AL 5083-H111  
Fabric: Black (V1)  
Any other upon request (optional)  
Side support (Lumbar): Optional

## Stroke:

98mm (3.85")

## Total weight:

21 kg (46.30 lbs) (with ÖHLINS )

## Total Dimensions (LxHXW):

711x1202x257 mm<sup>3</sup>

## Shock:

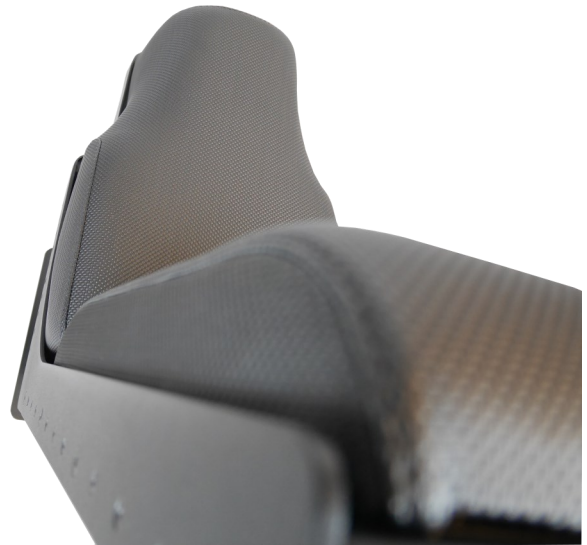
Shock Absorber: ÖHLINS  
Adjustments: Preload, rebound.  
There is a range of springs that can be used in order to meet any customer requirement and level of comfort.

## Maintenance:

According to product manuals.

## Use:

Indoor or outdoor



## Optional



Cover



Side supports



2-point seat belts



[www.er-products.com](http://www.er-products.com) /

[Info@er-products.com](mailto:Info@er-products.com)

## Jockey, J-MIL-Dist.



### Description

For all those who prefer the perfect fabric quality and the extra fine sewing technique!

### Features

- New Design.
- Best quality fabric.
- Smart cushion.
- Waterproof Sewing.
- Top stitched and double stitched seams.
- High quality finishing.
- A wide variety of colors and designs can be combined to meet any customer's needs and decorate his boat.
- One of the biggest advantages of our jockey series seat is the seat foam, the quality and quantity of which provides the greatest possible protection against injury.

# J-MIL-Dist.

## Material:

- Bi-elastic Vinyl (two-directional stretching)

## Qualities:

- anti-slide quality
- Long durability
- UV resistant
- Salt- water resistant
- Perspiration resistant
- Urine resistant
- Saliva resistant
- Waterproof
- Non-irritant

## Color:

- Black (standard)
- Any other upon request (optional)

## Maintenance:

According to product manuals.

## Use:

Indoor or outdoor

Optional



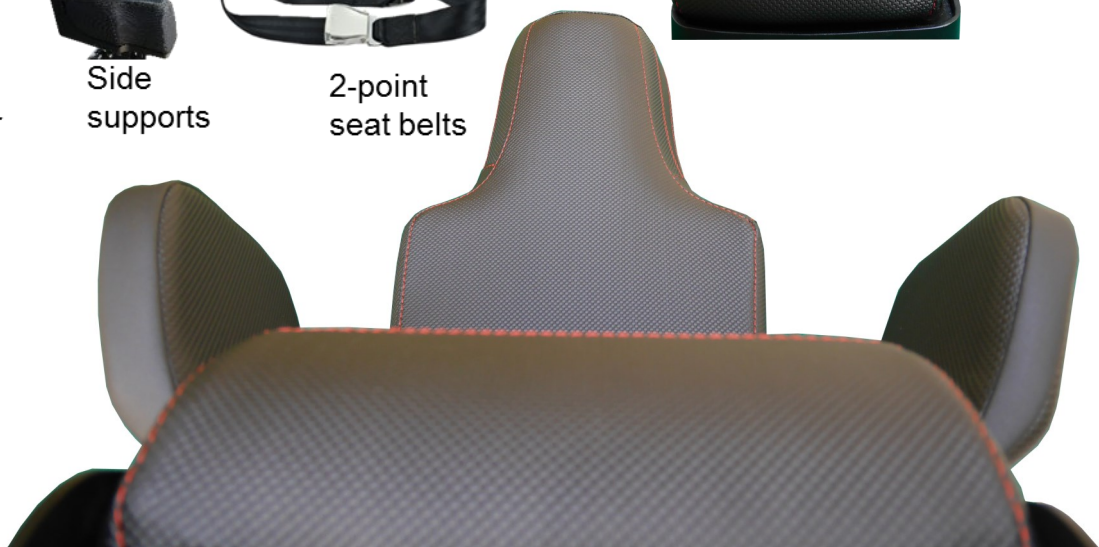
Cover



Side supports



2-point seat belts



[www.er-products.com](http://www.er-products.com) /

[Info@er-products.com](mailto:Info@er-products.com)

## Susp. PL Adv v5



The suspended seat pedestal "Suspension PL" has been designed to cooperate with any seat which is going to be used for giving shock mitigation to extreme or pleasure high speed crafts.

The term "**PL**" stands for "**PLeasure**". The mechanism was originally designed for high speed recreational boats but its performance has since been upgraded so that it can be used in any type of application (professional, military, pleasure) by professional or amateur riders.

The term "**ADV**" stands for "**ADVance**". This mechanism has been improved by incorporating all the experience we have gained from our involvement with high-speed boats and the damping of vibrations presenting a particularly enhanced structural integrity.

The mechanism, due to its geometry and the reclining shock adjustment, provides:

- Wider range of passenger weight.
- Better comfort conditions during any trip or mission.
- Optimal body posture for handling both static and dynamic loads.
- Optimum shock mitigation for spine and neck.

Our goal to be in the fore front of HSC seats manufactures lead us to [Ohlins](#), the worldwide leader in racing motor sports and famous for their passion for innovations and their state-of-the-art technology.

The perfect quality of the shock, combined with the dedicated settings made by Ohlins Team, places this suspension system among the leaders of its category.

Every detail (low friction joints, bearings, materials, settings, painting, strength, dynamic response, comfort, etc.) has been designed with special care in order to increase the reliability and the product life span.

Test-bed experiments and measurements for evaluating the dynamic behavior of the developed suspension system are carried out in "Systems and Measurements" Laboratory in Electrical & computer Engineering Dept. of University of Patras, Greece.

# Susp. PL Adv v5

## Suspension System:

Model: Susp. PL Adv. v5

Color:

Black, 9005 STR (standard)  
Anodized (Optional)  
Any other upon request (optional)

Material:

AL 6082, 6061-T6, 5083-H321  
SST 316 / 304L

Bearings:

Taper x 8

Weight:

18,5 Kg (40.78 lbs) (with shock)

Height Adjustment:

3 positions

Dimensions (LxHXW):

414x432x300 mm<sup>3</sup>

Passenger Weight:

70-110Kg (154.3–242,5lbs) Standard Optimum  
Range

For lighter or heavier passenger, a different spring  
should be used.

## Shock:

Shock Absorber: Ohlins SD36W

Stroke (Vertical direction):

78mm (Mid position)

Adjustments:

Preload

Rebound

Shock direction slope, 5 positions

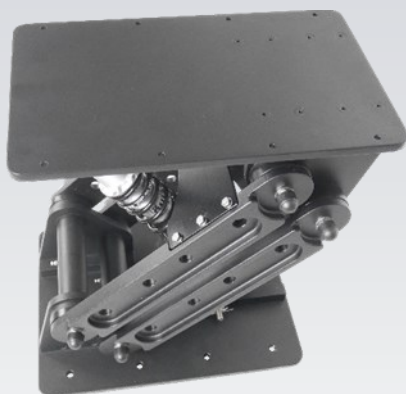
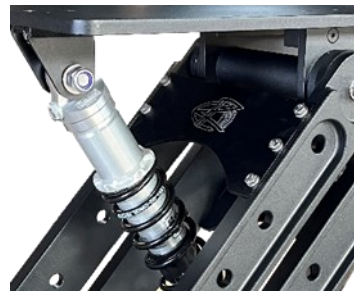
Shock weight: 1.5kg

## Maintenance:

According to product manuals.

## Applications:

- For any High speed boat.
- Suggested for seats with passengers in seated position.
- Indoor or outdoor use.



[www.er-products.com](http://www.er-products.com) /

[Info@er-products.com](mailto:Info@er-products.com)

## Spartan, SP-III-PL



"SP-III-PL" is especially designed with the goal of reduced weight combined with robustness.

### Features

- Optimizing posture for impact protection and comfort.
- ÖHLINS Adjustable Progressive Shock Absorber.
- Designed to fit limited and closed cabins.
- Designed for outdoor or indoor use.
- Extra Lightweight.
- Protects the operator from getting injured.
- The seating geometry is designed to give passengers the optimal body posture for handling both static and dynamic loads.
- Optimum shock mitigation in the spine and neck direction.
- Shock reclining (5 standard positions).
- Lateral & Lumbar Support.



# SP-III-PL

## Suspension System:

Model: SP-III-PL, Adv.  
Color: Black  
Anodized parts  
Material: Aluminum, Marine  
SST 316L

## Seat:

Model: SP-III  
Structure Color: Black  
Structure Material: Aluminum Marine  
Height Adjustment: 5 positions

## Shock Weight:

1.5 kg

## Passenger Weight:

60-120 kg Standard Optimum Range

## Total weight:

30.5 kg (67.24 lbs)

## Dimensions (LxHXW):

646x(1214-1265)x482 mm<sup>3</sup>

## Shock:

Shock Absorber: Coil spring  
Adjustments: preload, rebound.  
Spring Hardness (depends on the model)  
Shock weight: 1.5kg

## Maintenance:

According to product manuals.

## Use:

Indoor or outdoor



[www.er-products.com](http://www.er-products.com) /

[Info@er-products.com](mailto:Info@er-products.com)

# Spartan, SP-IV-PL



"SP-IV-PL" gathers all the experience we have gained over the past years from our involvement with marine products.

Our effort to be at the top of the competition and our passion for innovation has led us to design this avant-garde system that incorporates many advanced technologies

## Features

- Advanced Suspension PL
- Improved ergonomics design
- Compact dimensions
- Light weight
- ÖHLINS Coil Spring Shock
- Height adjustment
- Easy weight adjustment
- Better comfort conditions during any trip or mission.
- Optimal body posture for handling both static and dynamic loads.
- Optimum shock mitigation for spine and neck.

Every detail (low friction joints, bearings, materials, settings, paint, strength, dynamic response, comfort, weight, operation angle, dimensions, etc.) has been designed with special care in order to increase the reliability, the product life span and place the product at the top of his category.

# SP-IV-PL

## Suspension System:

Model: SP-IV-PL, Adv.  
Color: Black  
Anodized parts  
Material: Aluminum, Marine  
SST 316L

## Seat:

Model: SP-IV  
Structure Color: Black  
Structure Material: Aluminum Marine  
Height Adjustment: 5 positions

## Shock Weight:

1.5 kg

## Passenger Weight:

60-120 kg Standard Optimum Range

## Total weight:

34 kg (74.96 lbs)

## Dimensions (LxHXW):

629x(1264-1316)x545 mm<sup>3</sup>

## Shock:

Shock Absorber: Coil spring  
Adjustments: preload, rebound  
Spring Hardness (depends on the model)  
Shock weight: 1.5kg

## Maintenance:

According to product manuals.

## Use:

Indoor or outdoor



[www.er-products.com](http://www.er-products.com) /

[Info@er-products.com](mailto:Info@er-products.com)

# T-PL-GRP

Carbon look



Carbon look & side panels



## Description

The T-PL-GRP is an amazingly comfortable & impressively light seat developed using lots of experience gained from racing cars and karts industry.

This seat is not only exceptionally light but also very rigid, qualities that add to the handling feedback and the feeling of security.

The perfect quality of the shock, the fantastic seat design and the frictionless suspension system, places this model among the leaders of its category.

## Features

- Light and rigid structure
- Optimizing posture for impact protection and comfort
- ÖHLINS Adjustable Progressive Shock Absorber
- Designed for outdoor or indoor use
- Non corrosive materials used in any components
- Lightweight racing performance
- Protects the operator from getting injured
- The seating geometry is designed to give passengers the optimal body posture for handling both static and dynamic loads
- Optimum shock mitigation in the spine and neck direction
- Lateral & Lumbar Support
- 3 and 4 Point Harness Option
- Drain holes
- Optional upholstery / carbon look
- Sliding system, Seat adjustment runners, double locking
- Test-bed experiments and measurements by "Systems and Measurements" Laboratory of University of Patras

# T-PL-GRP

## Suspension System:

Model:

Susp. PL, Adv.

Color:

Black, 9005-S STR (standard)  
Anodized, (Optional)  
Any other upon request (optional)

Material:

AL 6082, 6061-T6, 5083-H321  
SST 316 / 304L

## Seat:

Model:

GRP or GRP Carbon look

Color:

Black (standard)

Material:

GRP

## Stroke (Vertical direction):

76.5 (3.01") - 83mm (4.26") (depending on adjustment)

## Total weight:

22.6-23.6 kg (49.82–52.03 lbs) (with attach fitting)

## Dimensions (LxHXW):

660x(1308-1357)x450mm<sup>3</sup>

## Shock:

Shock Absorber: ÖHLINS

Adjustments: preload., rebound.

There is a range of springs that can be used in order to meet any customer requirement and level of comfort.

## Maintenance:

According to product manuals.

## Use:

Indoor or outdoor.



GRP Look



Carbon Look



Anodized



Black



[www.er-products.com/](http://www.er-products.com/)

[Info@er-products.com](mailto:Info@er-products.com)

## Susp. PLS



The mechanism "Suspension PLS" is a compact and high tech system that has been designed to cooperate with any seat which is installed in high speed crafts with restricted space and in need of shock mitigation.

The term "PL" stands for "PLeasure" and "S" for Short. The mechanism, due to its geometry and the reclining shock adjustment, provides:

- Height adjustment.
- Easy weight adjustment.
- Better comfort conditions during any trip or mission.
- Optimal body posture for handling both static and dynamic loads.
- Optimum shock mitigation for spine and neck.

Our effort to be at the top of the industry and our passion for innovation has led us to design this avant-garde system that incorporates many advanced technologies:

- The "ER-link" sophisticated linkage system.
- Self-lubricating bearings with resistance to vibrations.
- Compact dimensions.
- Light weight.
- Air Spring Shock.

The perfect quality of the shock, combined with the dedicated settings made by the ÖHLINS, places this suspension system among the leaders of its category.

Every detail (low friction joints, bearings, materials, settings, painting, strength, dynamic response, comfort, weight, operation angle, dimensions, etc.) has been designed with special care in order to increase the reliability, the product life span and place the product at the top of its category.

Test-bed experiments and measurements for evaluating the dynamic behavior of the developed suspension system are carried out in "Systems and Measurements" Laboratory in Electrical & computer Engineering Dept. of University of Patras, Greece.

# Susp. PLS

## Suspension System:

Model: Suspension Ver. PLS

Color:

Black,  
Anodized parts

Material:

AL 6082, 6061-T6, 5083-H321  
SST 316 / 304L

Bearings:

Self Lubricating

Weight:

6,350 Kg (14 lbs) (with shock)

Height Adjustment:

3 positions

Dimensions (LxHXW):

(389-439)x(396-445)x260 mm<sup>3</sup>  
(15.31-17.28)x(15.59-17.52)x10.24 in<sup>3</sup>

Passenger Weight:

60-120Kg (132-264,5lbs) Standard Optimum  
Range

## Shock:

Shock Absorber: TTX, Coil or Air Spring

Stroke (Vertical direction):

51 (2.01") - 57mm (2.24") (depending on shock  
model)

Adjustments:

Preload

Rebound

Low & high speed compression

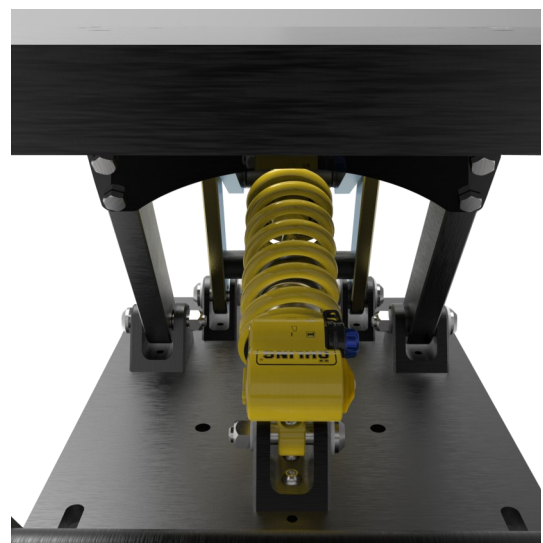
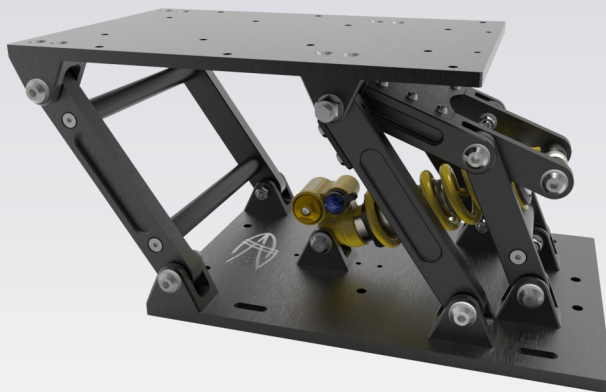
Shock weight: 0.205kg

## Maintenance:

According to product manuals.

## Applications:

- Can be fitted to any seat using a special fitting adapter.
- For any High speed boat.
- Indoor or outdoor use.



[www.er-products.com](http://www.er-products.com) /

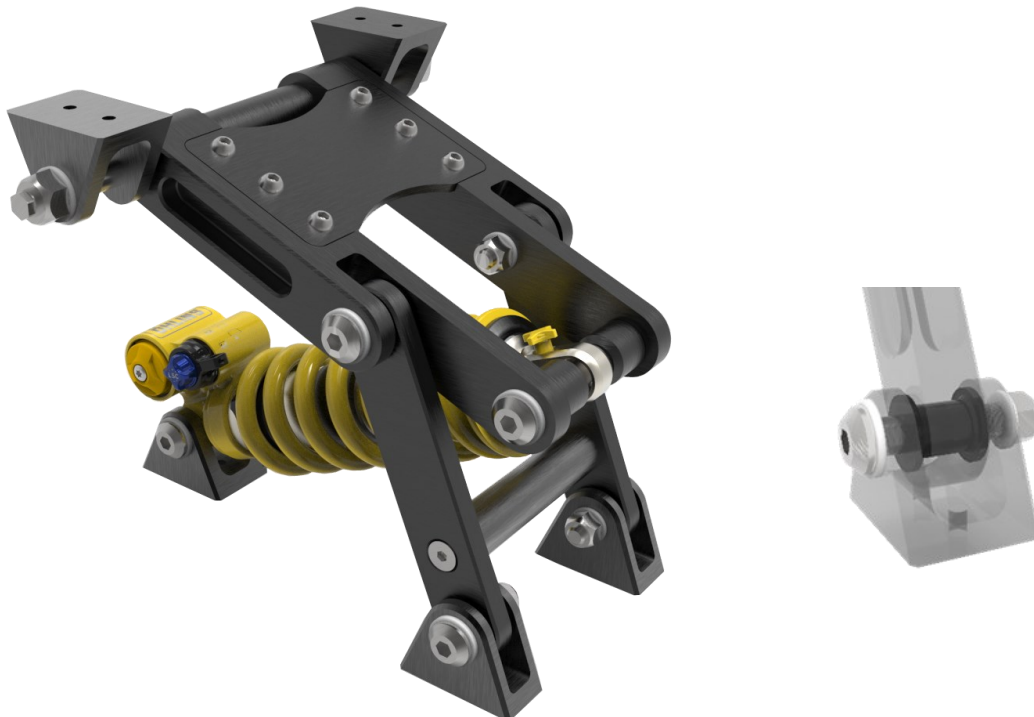
[Info@er-products.com](mailto:Info@er-products.com)

# Susp. PLS

## *Innovation*

### "ER-link" linkage system

- Suspension PLS incorporates a linkage system with a rising rate to deliver notably compliant and comfortable operation quality with a high level of vibrations control. This linkage structure is named "ER-link", it is adopted by motorbikes, mountain bikes, snowmobiles and cars world and it the first time in history that such a sophisticated system is applied in boats.
- "ER-link" features a single coil spring damper unit connected to the swingarm via a progressive linkage setup to deliver an ideal combination of spring and damping rates over a wide range of riding conditions. Initial rates are soft, in order to yield supple action over small shocks. As the suspension compresses, increasingly stiffer rates resist bottoming and maintain vibration control over rougher shocks.
- With ER-Link, the upper shock mount is contained within the swingarm rather than being mounted to the frame. With no top frame mount for the shock, this unique system reduces negative suspension energy from being transmitted into the frame, allowing optimum frame rigidity.
- Due to the precise design of the system, the angle of the shock absorber remains almost constant during operation, adding a smooth and perfect aligned movement of the main shaft free from unwanted friction.



[www.er-products.com](http://www.er-products.com) /

[Info@er-products.com](mailto:Info@er-products.com)



# Chameleon, CH-T1LS



Chameleon T1LS (CH-T1LS) perfect ergonomic design, high shock mitigation performance, practical/compact design, height adjustment, folding footrest, light weight, aluminum structure, high precision folding system, Ohlins shock, etc.

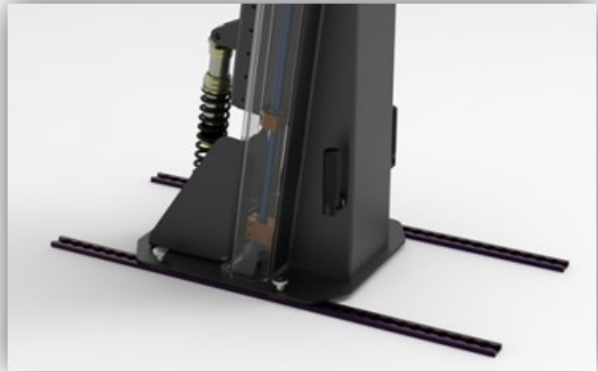
The CH-T1LS model can be combined with either the S36DRW (Short version, Stroke  $\approx$ 100mm) shock absorber or the ILX36 (Long version, Stroke  $\approx$ 200mm) shock absorber.

L: Long & S: Short

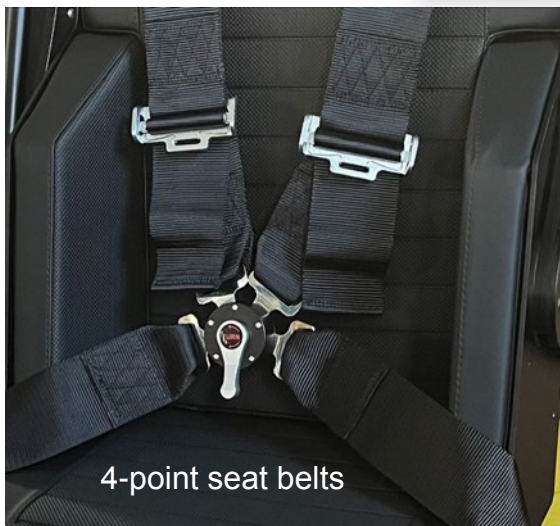
## **Basic features**

- Ergonomic design
- Height adjustment ( $\pm$ 6.5 cm)
- Fold up saddle
- Back folding foot rest
- For outdoor or indoor use
- High quality cushion material
- Waterproof sewing
- Extra fine seams/stitching technique
- High quality finishing
- Wide range of colors
- Customized solutions
- Optimizing posture for impact protection and comfort
- ÖHLINS Shock Absorber
- Non corrosive materials used in any components
- Lightweight
- Handling both static and dynamic loads
- Optional armrest & hand grips
- Optional 2 or 4 point seat belts

# CH-T1LS



## Chameleon-T1LS Accessories



4-point seat belts



2-point seat belts



Armrest / hand grips



[www.er-products.com](http://www.er-products.com) /

[Info@er-products.com](mailto:Info@er-products.com)

# CH-T1LS

**Model:**  
Chameleon T1LS  
L:Long & S:Short

**Suspension:**  
Type RG (Rail Guides)

**Structure Color:**  
Black, 9005. STR (standard)  
Any other color upon request  
(optional)

**Structure Material:**  
AL 5083 /AL 6082/ AL6061  
SST 316 / SST 304

**Fabric:**  
Vinyl Black (standard)  
Any other upon request (optional)

**Nominal Stroke:**  
vs S: 100mm  
vs L: 200mm

**Nominal Total weight (All accessories included):**  
vs S: 56.5kg  
vs L: 58kg

**Nominal Dimensions (LxHXW ):**  
vs S: 573x(1232±65)x506 mm<sup>3</sup>  
vs L: 573x(1232±65)x506 mm<sup>3</sup>

**Shock:**  
vs S: ÖHLINS S36DWR  
Adjustments: preload/rebound  
vs L: ÖHLINS ILX36  
Adjustments: preload/rebound/compression  
There is a range of springs that can be used in  
order to meet any customer requirement and  
level of comfort

**Maintenance:**  
According to product manuals.

**Use:**  
Indoor or outdoor

**Notes:**  
Powder coating paint.  
Powder epoxy primer or enhanced corrosion protection.  
Alodine / chromate conversion per MIL-DTL-81706 Anodizing 10-20µm machined parts



[www.er-products.com](http://www.er-products.com) /  
[seats@okyalosmil.gr](mailto:seats@okyalosmil.gr)

# Chameleon, CH-T3



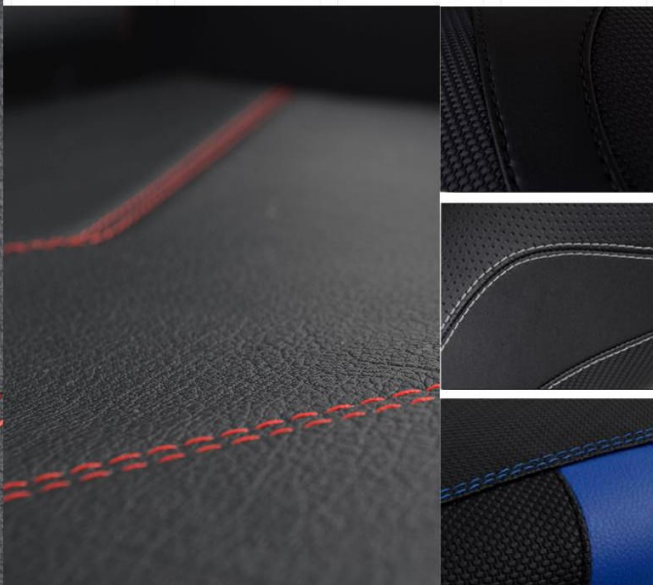
Chameleons (CH) are a distinctive and highly specialized clade of Old World lizards with over 160 species described. These species come in a range of colors, and many species have the ability to change color. "Chameleon" is also the new suspension seat by ERpro because it combines a variety of colors and adjustments that enable the seat to fit to the most demanding space of a boat.

## **Basic features**

- Height adjustment
- Folding / unfolding
- Ergonomic design
- Designed for outdoor or indoor use
- High quality cushion material
- Waterproof sewing
- Extra fine seams/stitching technique
- High quality finishing.
- Wide range of colors.
- Customized solutions.
- Optimizing posture for impact protection and comfort.
- ÖHLINS Adjustable Progressive Shock Absorber.
- Non corrosive materials used in any components.
- Lightweight.
- Handling both static and dynamic loads.
- Bottle holder.
- Auxiliary shelf.
- Storage area.



# CH-T3



[www.er-products.com](http://www.er-products.com) /

[Info@er-products.com](mailto:Info@er-products.com)

# CH-T3

**Model:** Chameleon T3

**Suspension:** Type RG (Rail Guides)

**Structure Color:** Black, AKSZO YN305F, SABLE (standard)  
Any other color upon request (optional)

**Structure Material:** AL 5083 /AL 6082  
SST 316 / SST 304L

**Fabric:** Black and Red  
Any other upon request (optional)

**Stroke:** 98mm (3.85")

**Total weight:** 30 kg (66.14 lbs)

**Dimensions (LxHXW):** 685x(971-1102)x458 mm<sup>3</sup>

**Shock:** Shock Absorber: ÖHLINS  
Adjustments: preload, rebound.  
There is a range of springs that can be used in order to meet any customer requirement and level of comfort

**Maintenance:** According to product manuals.

**Use:** Indoor or outdoor

**Notes:** Powder coating paint.  
Powder epoxy primer or enhanced corrosion protection.  
Alodine / chromate conversion per MIL-DTL-81706 Anodizing 10-20µm machined parts.



[www.er-products.com](http://www.er-products.com) /  
[seats@okyalosmil.gr](mailto:seats@okyalosmil.gr)

## Chameleon, CH-T3s



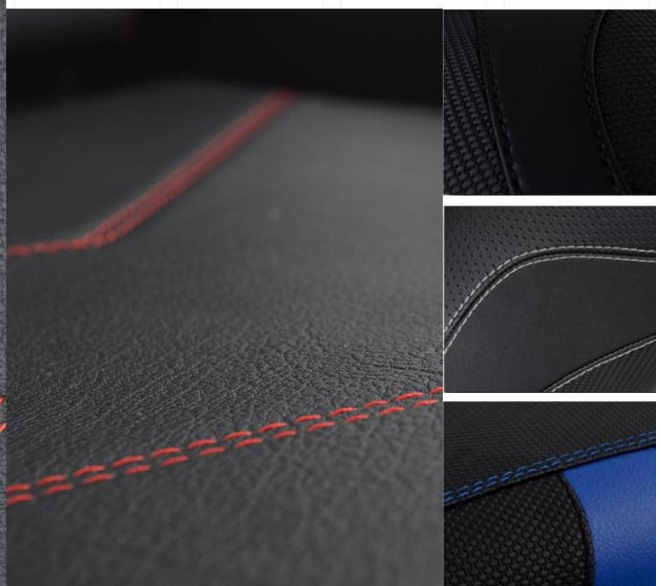
Chameleons (CH) are a distinctive and highly specialized clade of Old World lizards with over 160 species described. These species come in a range of colors, and many species have the ability to change color. "Chameleon" is also the new suspension seat by ERpro because it comes in a variety of colors and adjustments that enable the seat to fit even to the most demanding space of a boat.

T3s model has a short saddle and a more bucket side lumbar support.

### **Basic features:**

- Height adjustment
- Folding / unfolding
- Ergonomic design.
- Designed for outdoor or indoor use.
- High quality cushion material.
- Waterproof sewing.
- Extra fine seams/stitching technique.
- High quality finishing.
- Wide range of colors.
- Customized solutions.
- Optimizing posture for impact protection and comfort.
- ÖHLINS Adjustable Progressive Shock Absorber.
- Non corrosive materials used in any components.
- Lightweight.
- Handling both static and dynamic loads.
- Bottle holder.
- Auxiliary shelf.
- Storage area.

# CH-T3s



[www.er-products.com](http://www.er-products.com) /

[Info@er-products.com](mailto:Info@er-products.com)



# CH-T3s

**Model:**

Chameleon T3s

**Suspension:**

Type RG (Rail Guides)

**Structure Color:**

Black, 9005 STR (standard)  
Any other color upon request  
(optional)

**Structure Material:**

AL 5083 /AL 6082  
SST 316 / SST 304L

**Fabric:**

Black and Red  
Any other upon request (optional)

**Stroke:**

98mm (3.85")

**Total weight:**

40 kg (88.18 lbs)

**Dimensions (LxHXW):**

669x(1183-1311)x514 mm<sup>3</sup>

**Shock:**

Shock Absorber: ÖHLINS

Adjustments: preload, rebound.

There is a range of springs that can be used in order to meet any customer requirement and level of comfort

**Maintenance:**

According to product manuals.

**Use:**

Indoor or outdoor

**Notes:**

Powder coating paint.

Powder epoxy primer or enhanced corrosion protection.

Alodine / chromate conversion per MIL-DTL-81706 Anodizing 10-20µm machined parts



[www.er-products.com](http://www.er-products.com) /  
[seats@okyalosmil.gr](mailto:seats@okyalosmil.gr)

# Chameleon, CH-T4



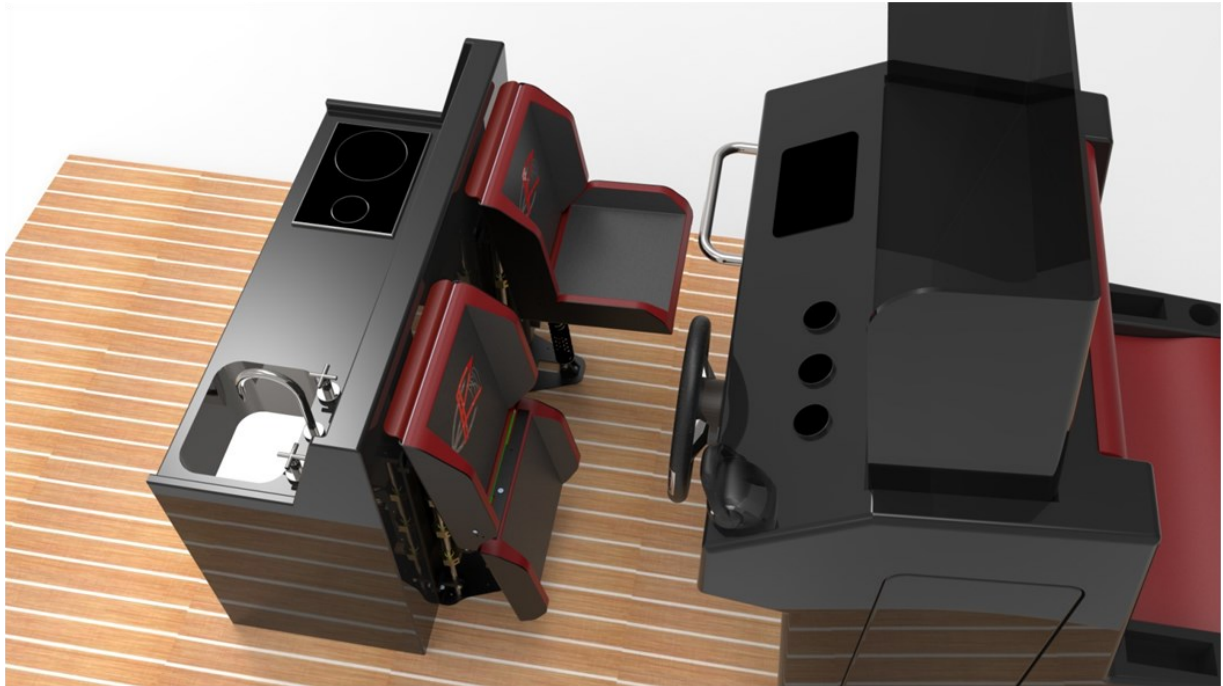
*"Which are the biggest problems of a high speed craft? 1.Space 2. Design 3. Shock mitigation"*

The myth busted by "Chameleon Type 4"! A configuration that is specially designed to resolve limited space issues.

## **Basic features**

- Height adjustment
- Folding / unfolding
- Ergonomic design
- Designed for outdoor or indoor use
- High quality cushion material
- Waterproof sewing
- Extra fine seams/stitching technique
- High quality finishing
- Wide range of colors
- Customized solutions
- Optimizing posture for impact protection and comfort
- ÖHLINS Adjustable Progressive Shock Absorber
- Non corrosive materials used in any components
- Lightweight
- Handling both static and dynamic loads

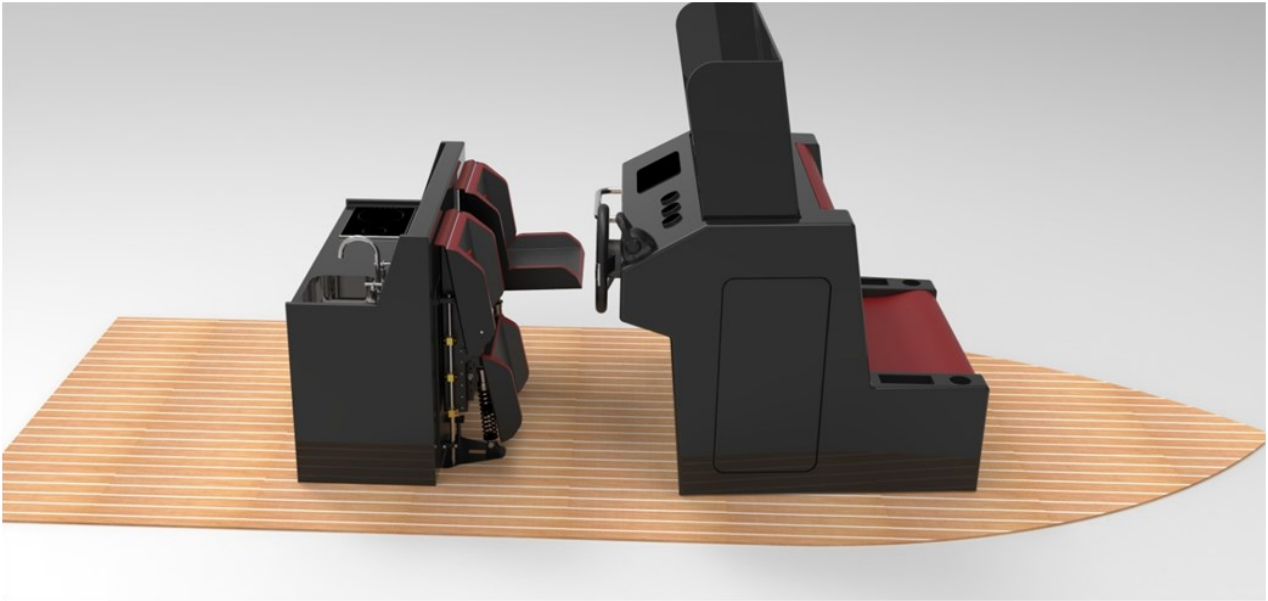
# CH-T4



[www.er-products.com](http://www.er-products.com) /

[Info@er-products.com](mailto:Info@er-products.com)

# CH-T4



[www.er-products.com](http://www.er-products.com) /  
[seats@okyalosmil.gr](mailto:seats@okyalosmil.gr)

# Chameleon, CH-T4s



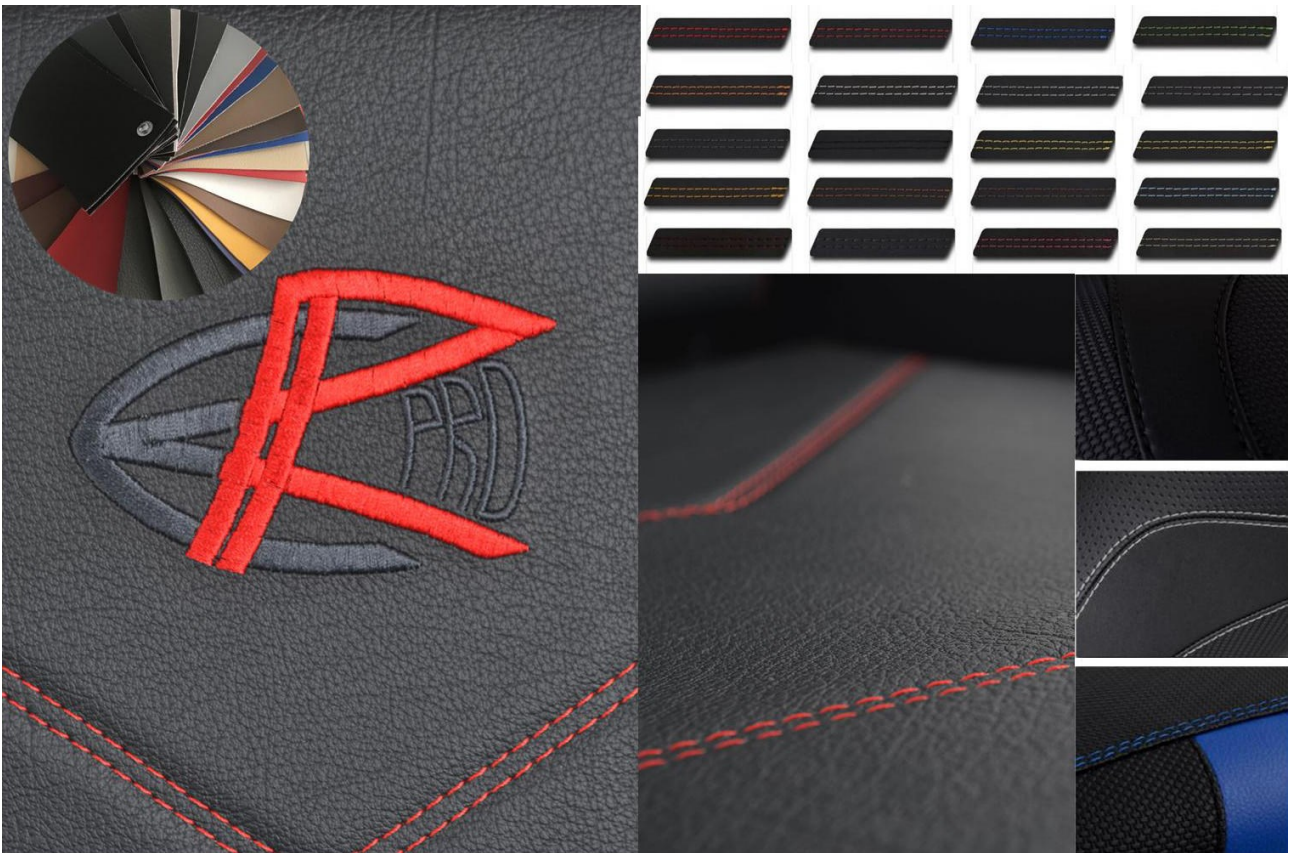
*"Which are the biggest problems of a high speed craft? 1.Space 2. Design 3. Shock mitigation"*

The myth busted by "Chameleon Type 4s"! A configuration that is specially designed to resolve limited space issues.

## **Basic features**

- Height adjustment
- Folding / unfolding
- Ergonomic design
- Designed for outdoor or indoor use
- High quality cushion material
- Waterproof sewing
- Extra fine seams/stitching technique
- High quality finishing.
- Wide range of colors
- Customized solutions
- Optimizing posture for impact protection and comfort.
- ÖHLINS Adjustable Progressive Shock Absorber
- Non corrosive materials used in any components
- Lightweight.
- Handling both static and dynamic loads.

# CH-T4s



[www.er-products.com](http://www.er-products.com) /  
[Info@er-products.com](mailto:Info@er-products.com)

# Chameleon, CH-T6



*"Which are the biggest problems of a high speed craft? 1.Space 2. Design 3. Shock mitigation"*

The problem solved by "Chameleon Type 6"! A configuration that is specially designed to resolve limited space issues.

## **Basic features**

- Wall mounted
- Height adjustment
- Folding / unfolding
- Ergonomic design
- Designed for outdoor or indoor use
- High quality cushion material
- Waterproof sewing
- Extra fine seams/stitching technique
- High quality finishing
- Wide range of colors
- Customized solutions
- Optimizing posture for impact protection and comfort.
- ÖHLINS Adjustable Progressive Shock Absorber
- Non corrosive materials used in any components
- Lightweight.
- Handling both static and dynamic loads.
- Head rest

# CH-T6

**Model:**

Chameleon T6N & T6W

**Suspension:**

Type RG (Rail Guides)

**Structure Color:**

White 9016 STR (standard) or black 9005 STR  
Any other color upon request  
(optional)

**Structure Material:**

AL 5083 /AL 6082  
SST 316 / SST 304L

**Fabric:**

Grey  
Any other upon request (optional)

**Stroke:**

98mm (3.85")

**Total weight:**

About 29 kg (64 lbs)

**Dimensions (LxHXW ):**

T6N: 576x(1613±65)x550 mm<sup>3</sup>  
T6W: 576x(1613±65)x600 mm<sup>3</sup>

**Shock:**

Shock Absorber: ÖHLINS

Adjustments: preload/rebound

There is a range of springs that can be used in order to meet any customer requirement and level of comfort

**Maintenance:**

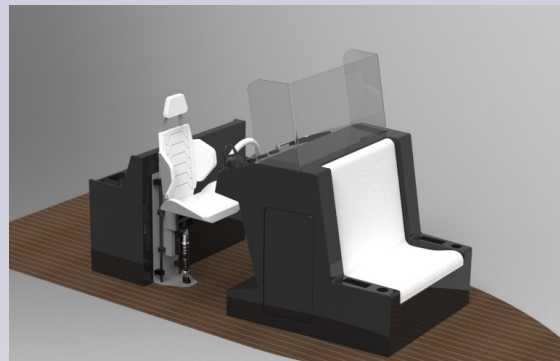
According to product manuals.

**Use:**

Indoor or outdoor.

**Notes:**

Powder coating paint.  
Powder epoxy primer or enhanced corrosion protection.  
Alodine / chromate conversion per MIL-DTL-81706 Anodizing 10-20µm machined parts



www.er-products.com /  
seats@okyalosmil.gr





[www.er-products.com](http://www.er-products.com)  
[Info@er-products.com](mailto:Info@er-products.com)